

# The Vantor™ Hub

Task, download, and stream the world's most advanced spatial intelligence content through a secure cloud environment that offers subscription-based subscription-based cloud environment, simple APIs, and use case-specific apps.

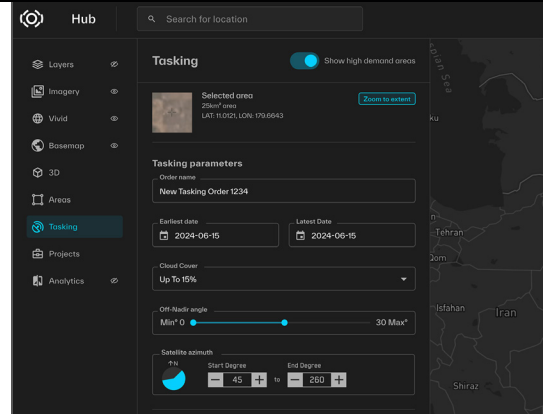


**Subscribe to the most advanced commercial spatial intelligence**

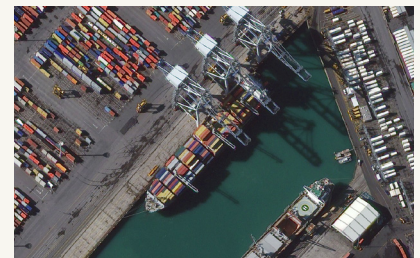
Running on top the Tensorglobe™ platform, this subscription-based cloud environment gives you on-demand access to high-resolution satellite imagery tasking and millions of sq km of 2D and 3D basemaps for advanced analytics.

## Features and benefits

- + Subscription-based cloud environment with on-demand access to two decades of advanced satellite imagery and spatial content
- + Content continuously refreshed with 3 million sq km of new imagery added daily
- + Advanced change monitoring capabilities
- + Multi-tiered firewall approach with HTTPS encryption and active prevention
- + All 2D and 3D content available for both streaming and offline access with unlimited user seats
- + Streamlined access to world's most advanced spatial intelligence
- + Connect spatial intelligence directly into existing systems via APIs
- + Enhanced monitoring and intelligence workflows with built-in analytics
- + Maximum security with enterprise-grade protection

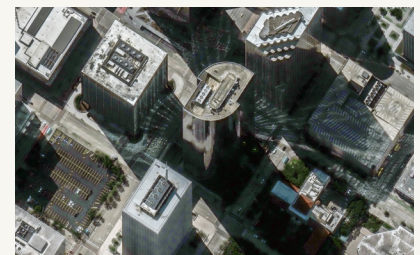


## Task and collect intelligence-grade imagery



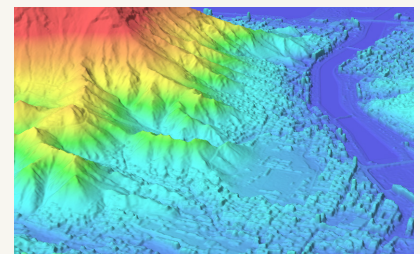
WorldView-3 | 30 cm  
Auckland, New Zealand

## Seamless, stunning global basemaps



Vivid™ Mosaic 15 cm  
Houston, Texas, United States

## Immersive 3D terrain



Vivid™ Terrain Digital Surface Model  
Al Mukalla, Yemen

Specifications

Electro-optical	WorldView Legion®, WorldView™ -4, 3, 2, 1, GeoEye-1, QuickBird, and enriched third-party sensor data
Imagery resolution	30-100 cm GSD pan-sharpened at nadir
Image bands	+ Full-resolution viewing and rapid downloading imagery is panchromatic (WorldView-1) and 3-band pan-sharpened natural color (all other sensors) + 8 band visible near infrared (VNIR)
Stereo Imagery	Full access to Vantor stereo archive. Image pairs are delivered as System-Ready (level 1B) with full metadata
Vivid Terrain	Industry leading accuracy: Absolute: 3 m LE90, 3 m CE90, Relative: 1 m LE90, 1 m CE90 at 0.5 m post-spacing
Imagery accuracy	8.4 m CE90, for most hosted imagery
API Discover and ordering	Full Hub API access to 125+ petabyte imagery archive
Vivid basemaps	+ Advanced 15 cm, 5 m CE90 + Standard 30 cm, 5 m CE90
Tasking	+ Priorities: Select and Select Plus + Areas: Low demand and high demand
Change Monitoring (CM)	+ CM Electro-optical + CM Synthetic aperture radar

Development of Subi Reef, South China Sea



WorldView-3 | Pan-sharpened natural color

8 January 2014



WorldView-2  
Pan-sharpened natural color

21 July 2015



WorldView-3  
Pan-sharpened natural color

20 August 2019



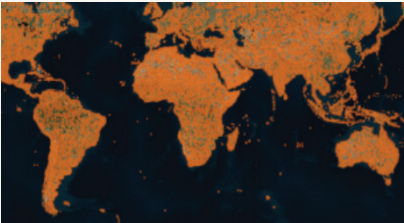
WorldView-3  
Pan-sharpened natural color

21 March 2023



WorldView-3  
Pan-sharpened natural color

Continuously refreshed content



Six months of new imagery collections shown as orange areas

Access options

Access the Vantor Hub via:

- + Portal UI
- + API

Subscription benefits:

- + On-demand access to two decades of advanced satellite imagery and spatial content
- + Unlimited seats for users
- + Available at multiple pricing levels based on data consumption or streaming seats

Security

- + Active prevention of SQL-Injection, cross-site scripting, DoS and DDoS attacks
- + HTTPS encryption of all communication between client and server
- + Multi-tiered firewall approach to ensure customer data protection
- + SFTP/FTPS, AWS S3, Google Cloud and Azure Cloud secure downloads are supported
- + Web Application Firewall that performs deep inspection of all web traffic